
Create & Connect to Ubuntu 18.04 Machine on Azure Cloud

[Edition 6]

[Last Update 200721]

For any issues/help contact : support@k21academy.com

Contents

1	Introduction	3
2	Documentation.....	4
2.1	Microsoft Documentation	4
3	Pre-Requisite	5
4	Create Virtual Machine On Azure Portal	6
5	Connect to Ubuntu Server Using Password & SSH Keys.....	11
5.1	Connect Using the Password.....	12
5.2	Connect Using SSH Keys.....	15
6	Stop OR Terminate Ubuntu Machine	19
7	Reset Virtual Machine Password	21
8	How to open ports in azure.....	24
9	How to remove Reserve Ip Option.....	28
10	Summary.....	34

1 INTRODUCTION

Azure Virtual Machines (VM) is one of several types of on-demand, scalable computing resources that Azure offers. Typically, you choose a VM when you need more control over the computing environment than the other choices offer. This article gives you information about what you should consider before you create a VM, how you create it, and how you manage it.

An Azure VM gives you the flexibility of virtualization without having to buy and maintain the physical hardware that runs it. However, you still need to maintain the VM by performing tasks, such as configuring, patching, and installing the software that runs on it.

Azure virtual machines can be used in various ways. Some examples are:

- **Development and test** – Azure VMs offer a quick and easy way to create a computer with specific configurations required to code and test an application.
- **Applications in the cloud** – Because demand for your application can fluctuate, it might make economic sense to run it on a VM in Azure. You pay for extra VMs when you need them and shut them down when you don't.
- **Extended datacenter** – Virtual machines in an Azure virtual network can easily be connected to your organization's network.
- The number of VMs that your application uses can scale up and out to whatever is required to meet your needs.

Note: Stop The Virtual Machine if you are not using the machine.

2 DOCUMENTATION

2.1 Microsoft Documentation

1. Create a Virtual Machine using Azure Portal

<https://docs.microsoft.com/en-us/azure/virtual-machines/windows/quick-create-portal>

3 PRE-REQUISITE

Ensure that you have an account (Trail or Paid) in Azure Cloud.

Note: Follow Activity Guide

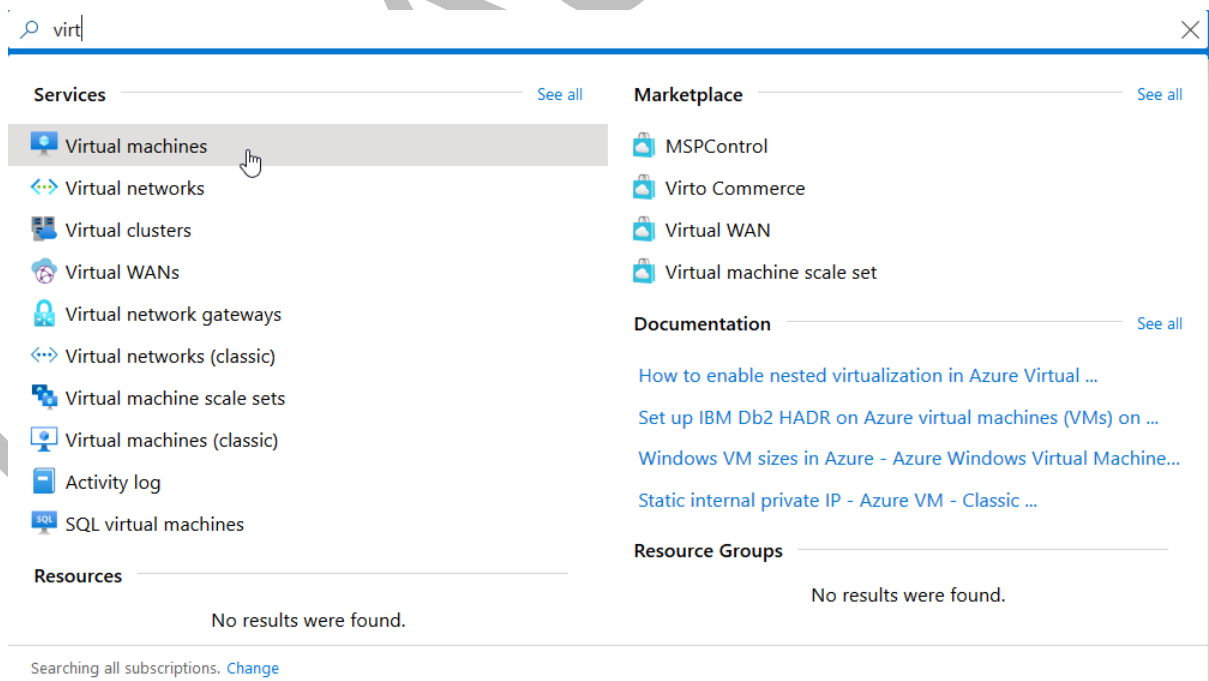
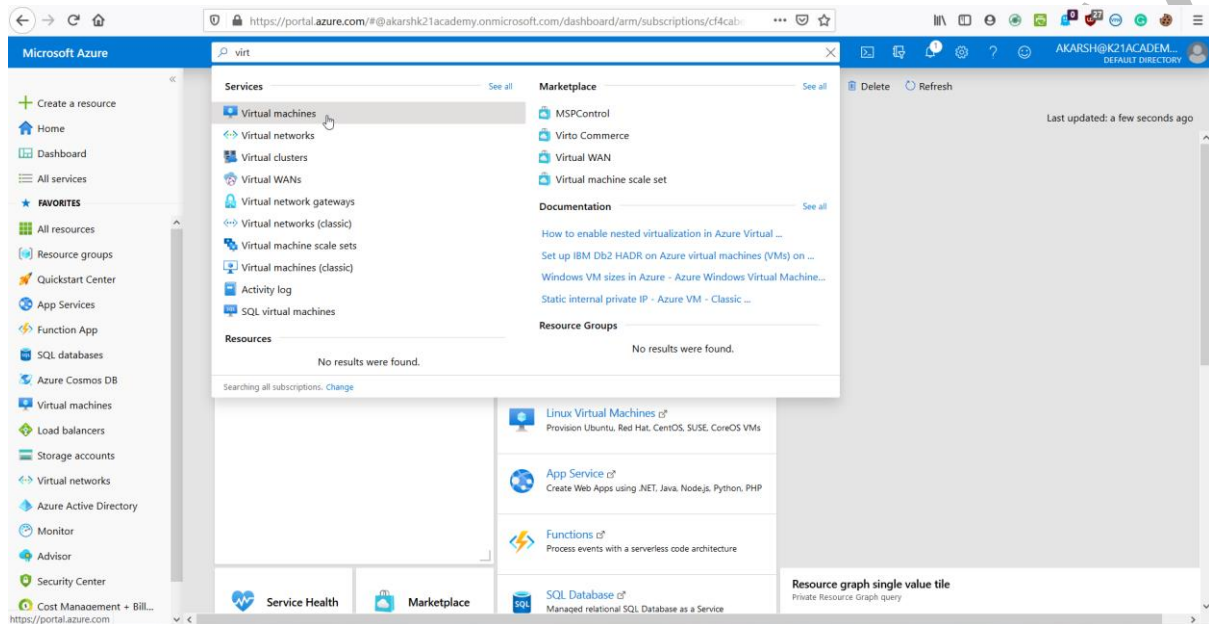
Register_For_Azure_Cloud_Account_Accessing_Console_ed** from portal

K21 Academy

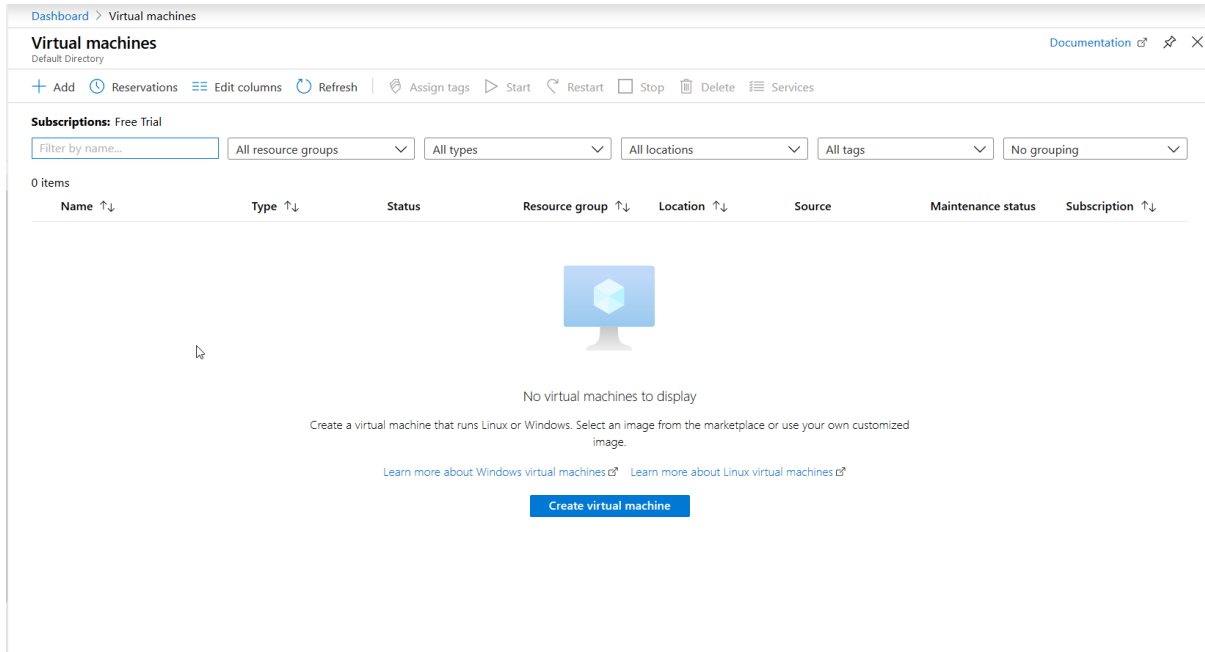
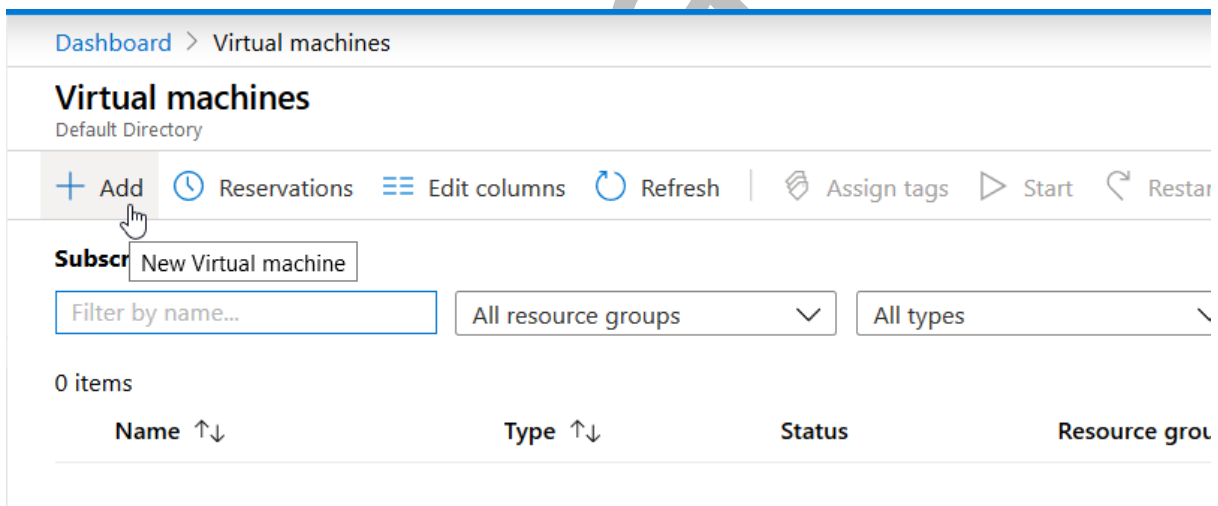
4 CREATE VIRTUAL MACHINE ON AZURE PORTAL

1. In the [Azure portal](#), search for Virtual Machine and select **Virtual Machine**.

Make sure you have an active subscription before doing all this. If you created a free account for the first time, you'll already have a FREE TRIAL subscription for 1 month.



2. Select Add.

3. Enter the following values:

- **Subscription:** Select your Azure subscription
- **Resource group:** Enter a new resource group name (*Note: If this is first time you are creating any resource then select Create New to create a new resource group*)
- **Virtual Machine name:** It should be a **unique** name throughout the Azure network.
- **Region:** Select an Azure location, such as **Western India, Central US** etc.

Create a virtual machine

Basics | [Disks](#) | [Networking](#) | [Management](#) | [Advanced](#) | [Tags](#) | [Review + create](#)

Create a virtual machine that runs Linux or Windows. Select an image from Azure marketplace or use your own customized image. Complete the Basics tab then Review + create to provision a virtual machine with default parameters or review each tab for full customization. [Learn more](#)

Project details

Select the subscription to manage deployed resources and costs. Use resource groups like folders to organize and manage all your resources.

Subscription * ⓘ

Azure for Students

Resource group * ⓘ

k21-demo-rg

[Create new](#)

Instance details

Virtual machine name * ⓘ

DockerMachine ✓

Region * ⓘ

(US) West US

Availability options ⓘ

No infrastructure redundancy required

Image * ⓘ

Ubuntu Server 18.04 LTS

[Browse all public and private images](#)

K21

Size * ⓘ

Administrator account

Authentication type ⓘ SSH public key Password

Username * ⓘ ✓

Password * ⓘ ✓

Confirm password * ⓘ ✓

Inbound port rules

Select which virtual machine network ports are accessible from the public internet. You can specify more limited or granular network access on the Networking tab.

Public inbound ports * ⓘ None Allow selected ports

Select inbound ports * ✓

⚠ This will allow all IP addresses to access your virtual machine. This is only recommended for testing. Use the Advanced controls in the Networking tab to create rules to limit inbound traffic to known IP addresses.

Optional: Using SSH Key pair in place of username/password to connect to Ubuntu machine

Another way to connect to machine is using SSH key pair and if you prefer SSH Key pair then select this option

[Home](#) > [Virtual machines](#) >

Create a virtual machine

Size * ⓘ Select size

Administrator account

Authentication type ⓘ

SSH public key Password

Username * ⓘ

✓

SSH public key * ⓘ

ssh-rsa
AAAAAB3NzaC1yc2EAAAABJQAAQEAgyZbb+pCu5FNiHV4bskXlWvgx4Uhv
q1kYIAdiv7MiaDg/nQbnEPXIVMUtXyGnv4Zmc9tQrf+y+0nrsmW/4VjIQSX9
[Learn more about creating and using SSH keys in Azure](#)

Inbound port rules

Select which virtual machine network ports are accessible from the public internet. You can specify more limited or granular network access on the Networking tab.

Public inbound ports * ⓘ

None Allow selected ports

Select inbound ports *

✓

⚠ This will allow all IP addresses to access your virtual machine. This is only recommended for testing. Use the Advanced controls in the Networking tab to create rules to limit inbound traffic to known IP addresses.

Review + create

[< Previous](#) [Next : Disks >](#)

■ ■ ■ Your deployment is underway

Deployment name: CreateVm-XXXXXXXXXX UbuntuServer-18.04-LTS-... Start time: 6/11/2020, 7:10:12 PM
Subscription: [Azure for Students](#) Correlation ID: XXXXXXXXXX
Resource group: [k21-demo-rg](#)

Deployment details [\(Download\)](#)

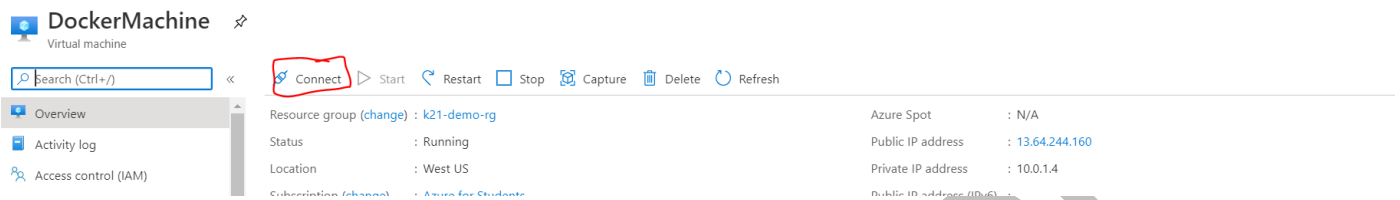
Resource	Type	Status	Operation details
No results.			

Note: Stop The Virtual Machine if you are not using the machine.

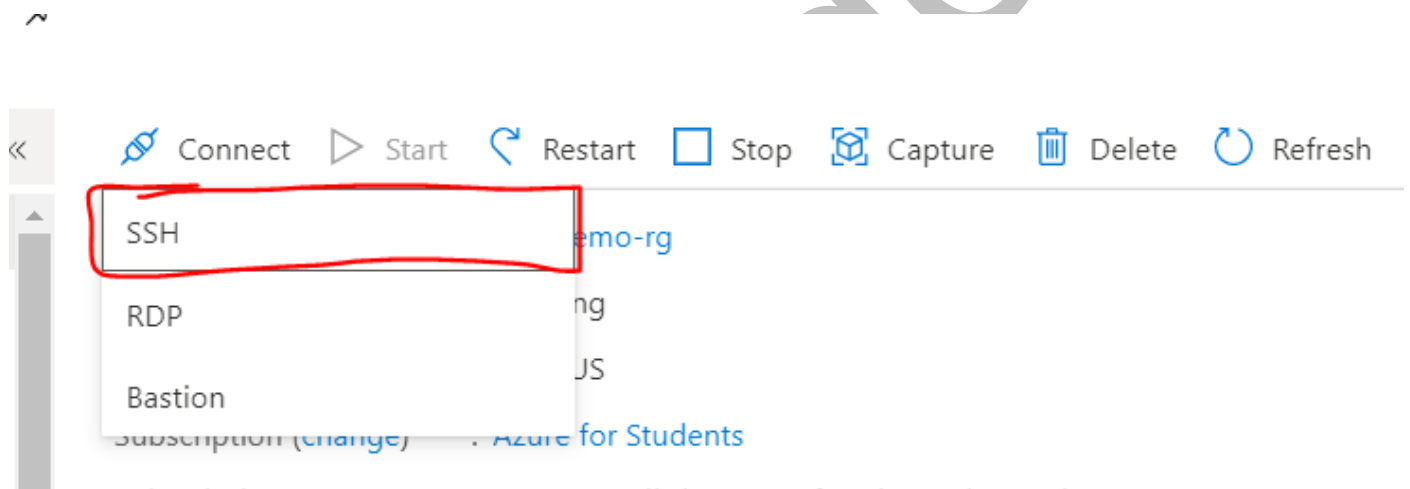
5 CONNECT TO UBUNTU SERVER USING PASSWORD & SSH KEYS

There are two ways to connect to machine Using SSH and using Password.

After you create a Virtual Machine, click on the newly created Virtual Machine. Click on **Connect**.



Now a dialogue box will open.



5.1 Connect Using the Password

1. Open **putty.exe** in your system
1. Enter the following

Host Name (or IP Address): Enter **Public IP of your instance**

Port: Enter **22**

Connection type: Select **SSH**

2. Enter the following

Login id: AzureUser

Password: your Password



```
40.122.207.189 - PuTTY
login as: AzureUser
AzureUser@40.122.207.189's password: █
```

Note: Stop The Virtual Machine if you are not using the machine.

```
login as: AzureUser
AzureUser@40.122.207.189's password:
Welcome to Ubuntu 18.04.4 LTS (GNU/Linux 5.3.0-1028-azure x86_64)

 * Documentation:  https://help.ubuntu.com
 * Management:    https://landscape.canonical.com
 * Support:       https://ubuntu.com/advantage

System information as of Fri Jun 26 10:55:50 UTC 2020


System load:  0.07          Processes:            121
Usage of /:   4.4% of 28.90GB Users logged in:     0
Memory usage: 4%          IP address for eth0: 10.0.2.4
Swap usage:   0%

0 packages can be updated.
0 updates are security updates.

Last login: Fri Jun 26 10:47:44 2020 from 47.31.49.160
To run a command as administrator (user "root"), use "sudo <command>".
See "man sudo_root" for details.

AzureUser@Dockermachine:~$ █
```

5.2 Connect Using SSH Keys

 To improve security, enable just-in-time access on this VM. →

RDP SSH BASTION

Connect via SSH with client

1. Open the client of your choice, e.g. **PUTTY** or other clients .
2. Ensure you have read-only access to the private key.

```
chmod 400 AzureUser.pem
```
3. Provide a path to your SSH private key file. ⓘ
Private key path
4. Run the example command below to connect to your VM.

```
ssh -i <private key path> AzureUser@13.64.244.160
```

Can't connect?

- [Test your connection](#)
- [Troubleshoot SSH connectivity issues](#)

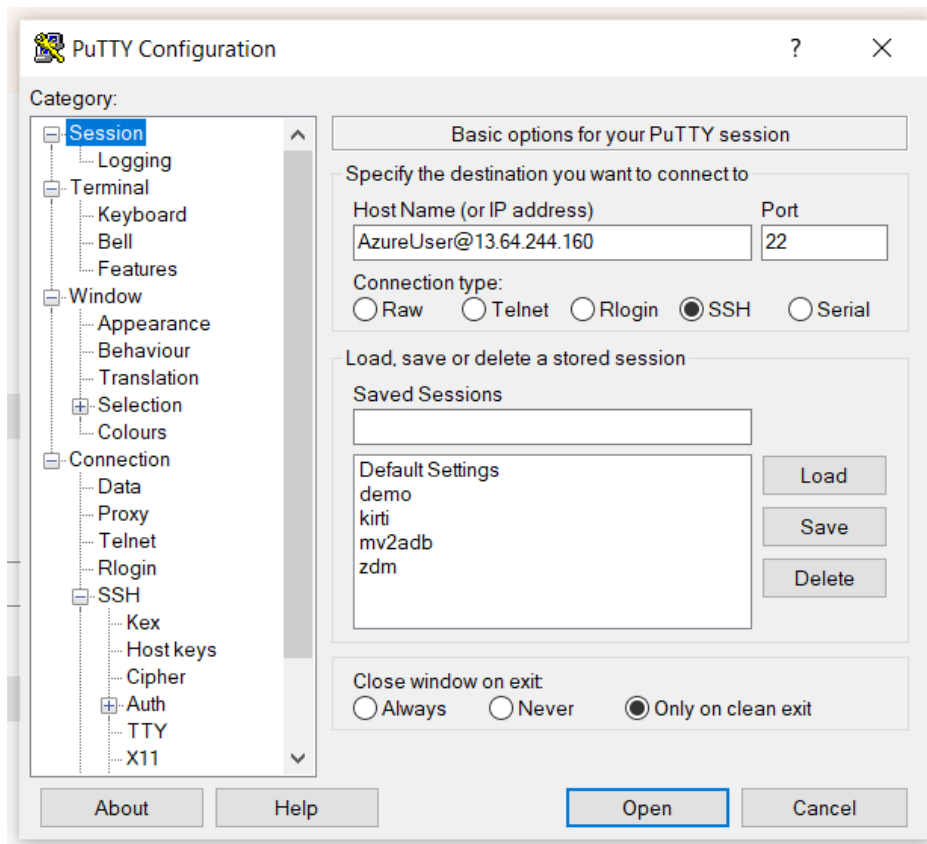
2. Open **putty.exe** in your system

3. Enter the following

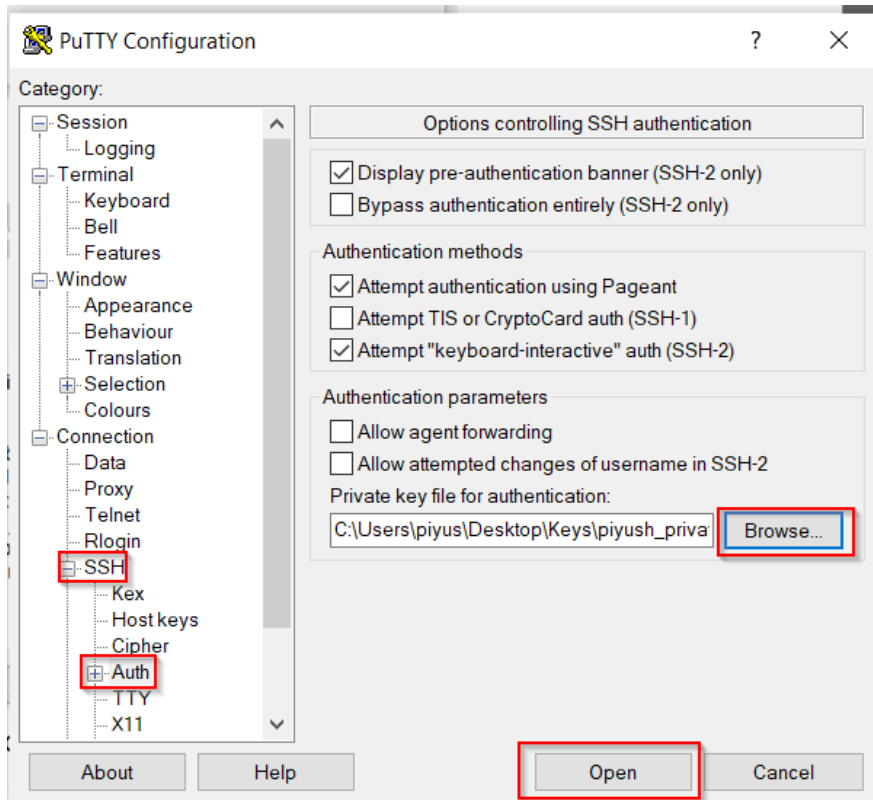
Host Name (or IP Address): Enter **username@Public IP AzureUser@13.64.244.160** of your instance

Port: Enter **22**

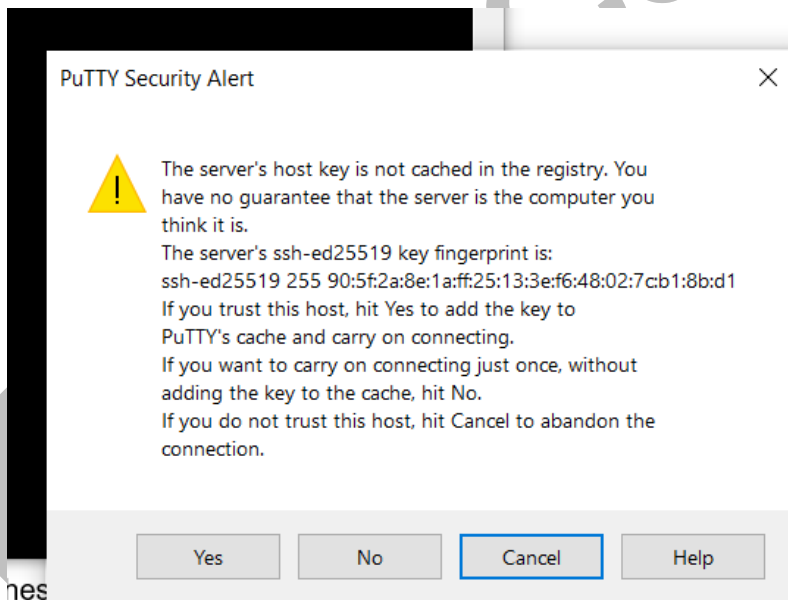
Connection type: Select **SSH**



4. Now, expand **SSH** and select **auth** and Browse your **Private key** and click **open**



5. Now, it will display the below message, then click on **Yes**



6. Once these steps done, Now you are successfully connected to your instance.

```
AzureUser@DockerMachine: ~  
└─$ Using username "AzureUser".  
└─$ Authenticating with public key "rsa-key-20190505"  
Welcome to Ubuntu 18.04.4 LTS (GNU/Linux 5.3.0-1022-azure x86_64)  
  
* Documentation:  https://help.ubuntu.com  
* Management:    https://landscape.canonical.com  
* Support:        https://ubuntu.com/advantage  
  
System information as of Thu Jun 11 13:49:28 UTC 2020  
  
System load:  0.08      Processes:      117  
Usage of /:   4.3% of 28.90GB  Users logged in:  0  
Memory usage: 3%        IP address for eth0: 10.0.1.4  
Swap usage:   0%  
  
0 packages can be updated.  
0 updates are security updates.  
  
The programs included with the Ubuntu system are free software;  
the exact distribution terms for each program are described in the  
individual files in /usr/share/doc/*/copyright.  
  
Ubuntu comes with ABSOLUTELY NO WARRANTY, to the extent permitted by  
applicable law.  
  
To run a command as administrator (user "root"), use "sudo <command>".  
See "man sudo_root" for details.  
  
AzureUser@DockerMachine:~$ █
```

Note: Stop The Virtual Machine if you are not using the machine.

6 STOP OR TERMINATE UBUNTU MACHINE

1. Go to the Machine Overview page

Dockermachine
Virtual machine

Search (Ctrl+/) << Connect Start Restart Stop Capture Delete Refresh

Resource group (change) : Dockermachine_group
 Status : Running
 Location : Central US
 Subscription (change) : Azure for Students
 Subscription ID : 3e2272c5-dbd5-4322-af00-d507c9b0626d

Operating system : Linux (ubuntu 18.04)
 Size : Standard D2s v3 (2 vcpus, 8 GiB memory)
 Public IP address : 40.122.207.189
 Colocation status : N/A
 Virtual network/subnet : Dockermachine_group-vnet/default
 DNS name : Configure

Tags (change) : [Click here to add tags](#)

Properties Monitoring Capabilities Tutorials

Virtual machine

Computer name	Dockermachine
Operating system	Linux (ubuntu 18.04)
SKU	18.04-LTS
Publisher	Canonical
VM generation	V1
Agent status	Ready
Agent version	2.2.48.1
Host ID	None
Proximity placement group	N/A

Networking

Public IP address	40.122.207.189
Public IP address (IPv6)	-
Private IP address	10.0.2.4
Private IP address (IPv6)	-
Virtual network/subnet	Dockermachine_group-vnet/default
DNS name	Configure

Size

Size	Standard D2s v3
vCPUs	2
RAM	8 GiB

2. Click on **Stop** to stop the machine then click on Ok to stop the machine.

Connect Start Restart **Stop** Capture Delete Refresh

Stop this virtual machine

⚠ Public IP address '40.122.207.189' will be lost if this VM is stopped

Do you want to reserve the Public IP address?

Do you want to stop 'Dockermachine'?

OK Cancel

3. Status will change to Stop now click on Start to start machine.

Dockermachine
Virtual machine

Search (Ctrl+/) << Connect **Start** Restart Stop Capture Delete Refresh

Overview

Activity log

Access control (IAM)

Tags

Diagnose and solve problems

Settings

Networking

Connect

Disks

Size

Security

Advisor recommendations

Extensions

Continuous delivery

Availability + scaling

Configuration

Identity

Properties

Locks

Resource group (change) : Dockermachine_group

Status : **Stopped (deallocated)**

Location : Central US

Subscription (change) : Azure for Students

Subscription ID : 3e2272c5-dbd5-4322-af00-d507c9b0626d

Tags (change) : [Click here to add tags](#)

Operating system : Linux

Size : Standard D2s v3 (2 vcpus, 8 GiB memory)

Public IP address : [40.122.207.189](#)

Colocation status : N/A

Virtual network/subnet : Dockermachine_group-vnet/default

DNS name : [Configure](#)

Properties Monitoring Capabilities Tutorials

Virtual machine

Computer name	(start VM to view)
Operating system	Linux
SKU	18.04-LTS
Publisher	Canonical
VM generation	V1
Host ID	None
Proximity placement group	N/A

Availability + scaling

Availability zone	N/A
-------------------	-----

Networking

Public IP address	40.122.207.189
Public IP address (IPv6)	-
Private IP address	10.0.2.4
Private IP address (IPv6)	-
Virtual network/subnet	Dockermachine_group-vnet/default
DNS name	Configure

Size

Size	Standard D2s v3
vCPUs	2
RAM	8 GiB

4. To Terminate the machine click on Delete

Dockermachine
Virtual machine

Search (Ctrl+/) << Connect Start Restart Stop Capture **Delete** Refresh

Overview

Activity log

Access control (IAM)

Tags

Diagnose and solve problems

Settings

Networking

Connect

Disks

Size

Security

Advisor recommendations

Extensions

Continuous delivery

Availability + scaling

Delete virtual machine

This action will permanently delete the virtual machine 'Dockermachine'. Associated resources (disks, virtual networks, etc) will not be deleted and can be removed manually. Do you want to continue?

Yes No

Tags (change) : [Click here to add tags](#)

DNS name : [Configure](#)

Properties Monitoring Capabilities Tutorials

Virtual machine

Computer name	(start VM to view)
Operating system	Linux
SKU	18.04-LTS
Publisher	Canonical
VM generation	V1
Host ID	None

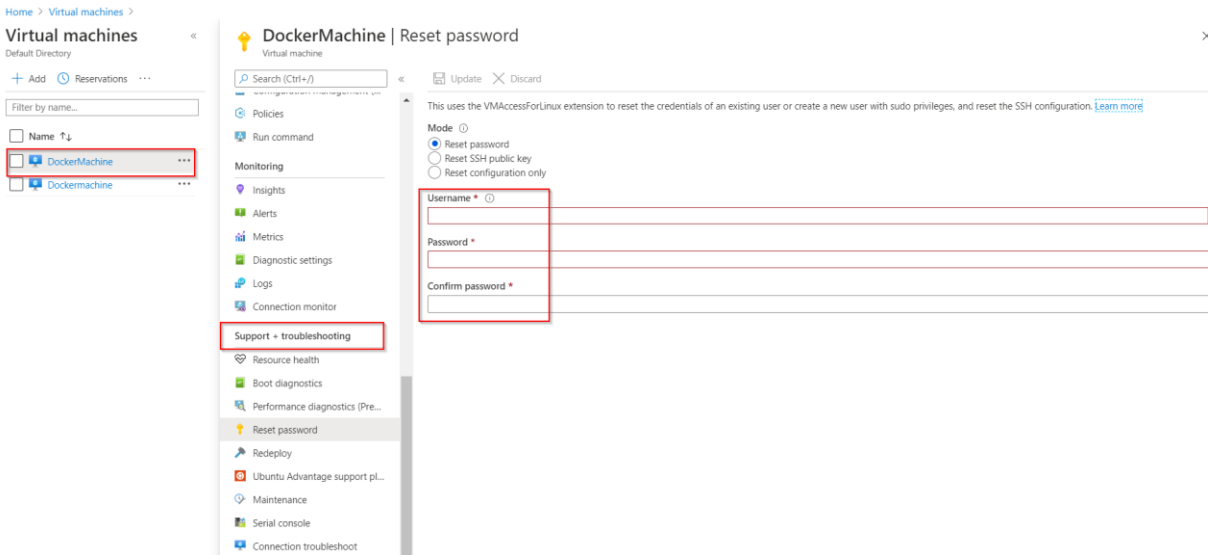
Networking

Public IP address	40.122.207.189
Public IP address (IPv6)	-
Private IP address	10.0.2.4
Private IP address (IPv6)	-
Virtual network/subnet	Dockermachine_group-vnet/default
DNS name	Configure

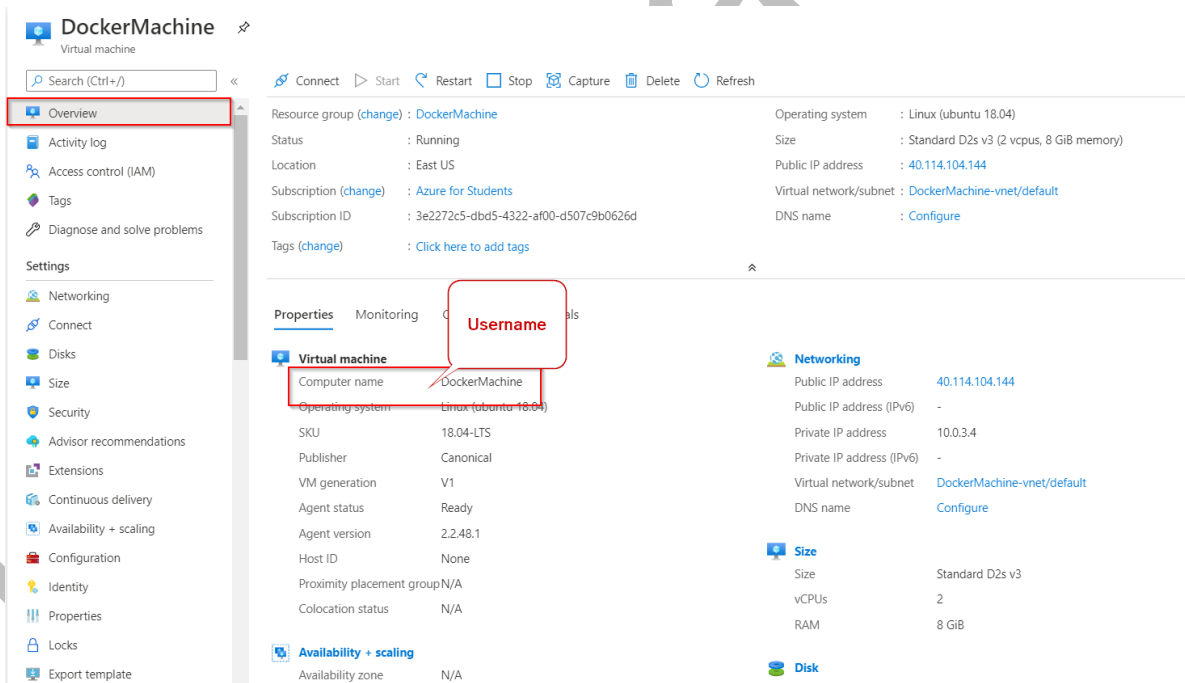
Note: Stop The Virtual Machine if you are not using the machine.

7 RESET VIRTUAL MACHINE PASSWORD

1. Select Virtual Machine and goto the **Support+Troubleshooting-> Reset Password**



2. Under Mode Enter **Username & New Password**



- Username: **DockerMachine**
- Password: **Enter your password**
- Confirm Password: **Confirm Enter your password**
- Click on Update

DockerMachine | Reset password

Virtual machine

Search (Ctrl+/) << **Update** Discard

This uses the VMAccessForLinux extension to reset the credentials of an existing user or create a new user with sudo privileges, and reset the SSH configuration. [Learn more](#)

Mode Reset password
 Reset SSH public key
 Reset configuration only

Username * DockerMachine ✓

Password * ✓

Confirm password * ✓

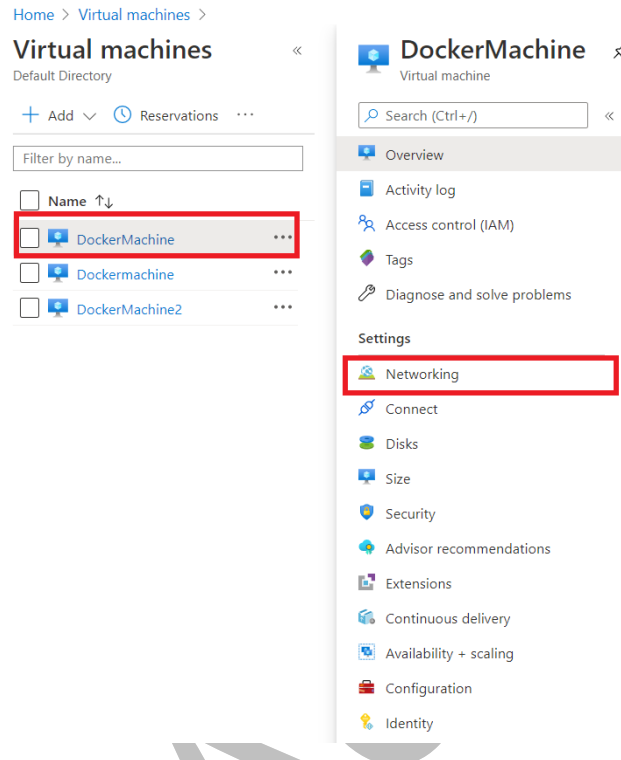
Navigation menu:
Policies
Run command
Monitoring
Insights
Alerts
Metrics
Diagnostic settings
Logs
Connection monitor
Support + troubleshooting
Resource health
Boot diagnostics
Performance diagnostics (Pre...
Reset password
Redeploy
Ubuntu Advantage support pl...
Maintenance
Cost console

K21Academy

K21 Academy

8 HOW TO OPEN PORTS IN AZURE

1. Reach the home page of Azure and select **Virtual Machines** and click on your **VM** and then click on **Networking**.



2. By opening networking section, you will see this on your screen and also a button called **Add inbound port rule**, click on that and you will see an **Add inbound security rule** window.

Home > Virtual machines >

Virtual machines

Default Directory

+ Add Reservations

Filter by name...

Name ↑↓

- DockerMachine
- Dockermachine
- DockerMachine2

DockerMachine | Networking

Virtual machine

Search (Ctrl+/) Attach network interface Detach network interface

- Overview
- Activity log
- Access control (IAM)
- Tags
- Diagnose and solve problems
- Settings
 - Networking**
 - Connect
 - Disks
 - Size
 - Security
 - Advisor recommendations
 - Extensions
 - Continuous delivery
 - Availability + scaling
 - Configuration
 - Identity

dockermachine49

IP configuration

ipconfig1 (Primary)

Network Interface: **dockermachine49** Effective security rules Topology

Virtual network/subnet: DockerMachine-vnet/default NIC Public IP: **DockerMachine-ip** NIC Private IP: **10.0.3.4**

Accelerated networking: **Disabled**

Inbound port rules Outbound port rules Application security groups Load balancing

Network security group **DockerMachine-nsg** (attached to network interface: **dockermachine49**)
Impacts 0 subnets, 1 network interfaces

Add inbound port rule

Priority	Name	Port	Protocol	Source	Destination
300	SSH	22	TCP	Any	Any
320	HTTP	80	TCP	Any	Any
340	HTTPS	443	TCP	Any	Any
65000	AllowVnetInBound	Any	Any	VirtualNetwork	VirtualNetwork
65001	AllowAzureLoadBalancerInBound	Any	Any	AzureLoadBalancer	Any
65500	DenyAllInBound	Any	Any	Any	Any

Home > Virtual machines >

Virtual machines

Default Directory

+ Add Reservations

Filter by name...

Name ↑↓

- DockerMachine
- Dockermachine
- DockerMachine2

DockerMachine | Networking

Virtual machine

Search (Ctrl+/) Attach network interface Detach network interface

- Overview
- Activity log
- Access control (IAM)
- Tags
- Diagnose and solve problems
- Settings
 - Networking**
 - Connect
 - Disks
 - Size
 - Security
 - Advisor recommendations
 - Extensions
 - Continuous delivery
 - Availability + scaling
 - Configuration
 - Identity
 - Properties
 - Locks

dockermachine49

IP configuration

ipconfig1 (Primary)

Network Interface: **dockermachine49** Effective

Virtual network/subnet: DockerMachine-vnet/default NI

Accelerated networking: **Disabled**

Inbound port rules Outbound port rules Applic

Network security group **DockerMachine-nsg** (attache

Impacts 0 subnets, 1 network interfaces

Priority	Name
300	SSH
320	HTTP
340	HTTPS
65000	AllowVnetInBound
65001	AllowAzureLoadBalancerInBound
65500	DenyAllInBound

Add inbound security rule

DockerMachine-nsg

Basic

Source * Any

Source port ranges * *

Destination * Any

Destination port ranges * 8080

Protocol * Any TCP UDP ICMP

Action * Allow Deny

Priority * 350

Name * Port_8080

Description

Add

3. Change the **Destination port ranges** from **8080** to ***** and also the **Name** from **Port_8080** to **All_Ports** and click on **Add**.

Add inbound security rule

DockerMachine-nsg

Basic

Source * ⓘ
Any

Source port ranges * ⓘ
*

Destination * ⓘ
Any

Destination port ranges * ⓘ
*

Protocol *
Any TCP UDP ICMP

Action *
Allow Deny

Priority * ⓘ
350

Name *
All_Ports

Description

Add

Note: For poc purposes we are opening all the ports in Azure cloud.

4. On successful creation you will see the new **All_Ports** in the list of **Inbound port rules** like in the below image.

Home > Virtual machines >

Virtual machines

Default Directory

+ Add Reservations ...

Filter by name...

- Name ↑↓
- DockerMachine ...
- Dockermachine ...
- DockerMachine2 ...

DockerMachine | Networking

Virtual machine

Search (Ctrl+F)

Attach network interface Detach network interface

- Overview
- Activity log
- Access control (IAM)
- Tags
- Diagnose and solve problems
- Settings
 - Networking
 - Connect
 - Disks
 - Size
 - Security
 - Advisor recommendations
 - Extensions
 - Continuous delivery
 - Availability + scaling
 - Configuration
 - Identity
 - Properties

dockermachine49

IP configuration

ipconfig1 (Primary)

Network Interface: **dockermachine49** Effective security rules Topology

Virtual network/subnet: DockerMachine-vnet/default NIC Public IP: **DockerMachine-ip** NIC Private IP: **10.0.3.4**
Accelerated networking: **Disabled**

Inbound port rules Outbound port rules Application security groups Load balancing

Network security group **DockerMachine-nsg** (attached to network interface: **dockermachine49**)
Impacts 0 subnets, 1 network interfaces

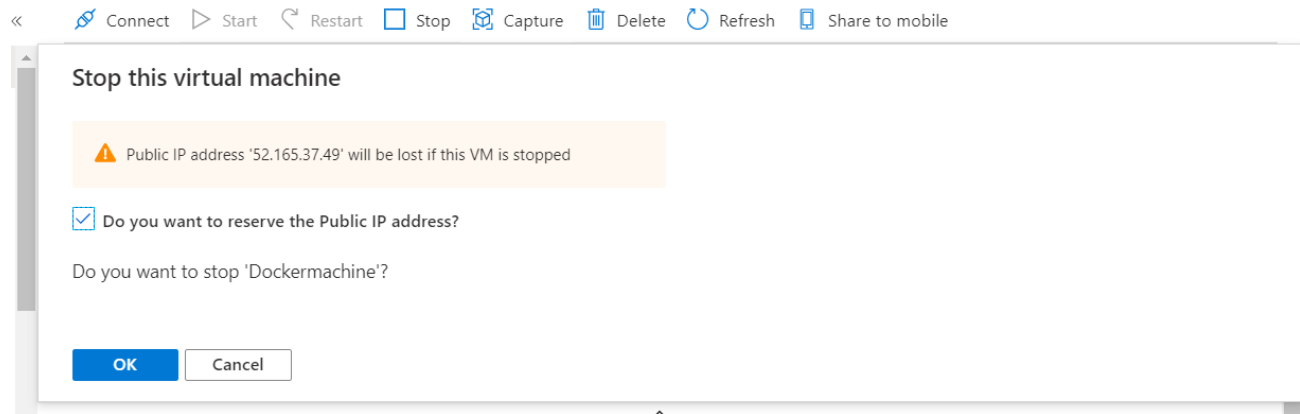
Add inbound port rule

Priority	Name	Port	Protocol	Source	Destination
300	SSH	22	TCP	Any	Any
320	HTTP	80	TCP	Any	Any
340	HTTPS	443	TCP	Any	Any
350	All_Ports	Any	Any	Any	Any
65000	AllowVnetInBound	Any	Any	VirtualNetwork	VirtualNetwork
65001	AllowAzureLoadBalancerInBound	Any	Any	AzureLoadBalancer	Any
65500	DenyAllInBound	Any	Any	Any	Any

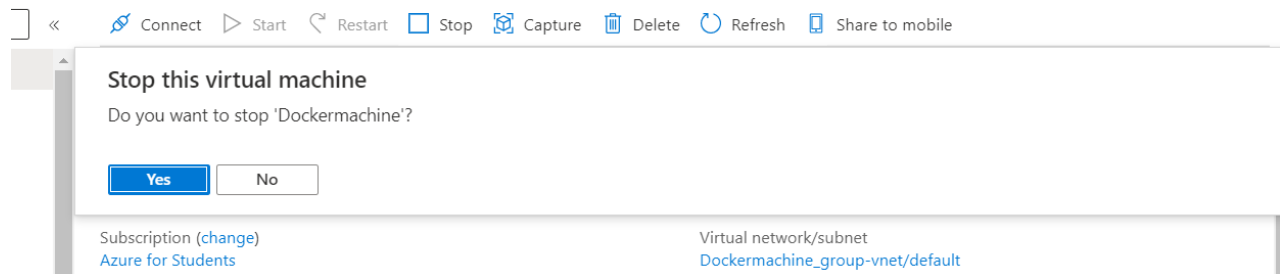
K21Academy

9 HOW TO REMOVE RESERVE IP OPTION

If you Accidentally Saved IP while Stopping a virtual machine then next time you will not get the option for **“reserve the Public IP”**.



Next we will not get the option for **“Reserve public IP address”**



1. Goto Networking in Menu

Dockermachine
Virtual machine

Search (Ctrl+/) << Connect Start Restart Stop Capture Delete Refresh Share to mobile

Overview
Activity log
Access control (IAM)
Tags
Diagnose and solve problems

Settings
Networking
Connect
Disks
Size
Security
Advisor recommendations
Extensions
Continuous delivery
Availability + scaling

Resource group (change) [Dockermachine_group](#)
Operating system: Linux
Status: Running
Size: Standard D2s v3 (2 vcpus, 8 GiB memory)
Location: Central US
Public IP address: [40.122.207.189](#)
Virtual network/subnet: [Dockermachine_group-vnet/default](#)
DNS name: [Configure](#)

Subscription (change) [Azure for Students](#)
Subscription ID: 3e2272c5-dbd5-4322-af00-d507c9b0626d
Tags (change) [Click here to add tags](#)

Properties Monitoring Capabilities Recommendations (0) Tutorials

Virtual machine
Computer name: (start VM to view)
Operating system: Linux
SKU: 18.04-LTS
Publisher: Canonical

Networking
Public IP address: [40.122.207.189](#)
Public IP address (IPv6): -
Private IP address: 10.0.2.4
Private IP address (IPv6): -

2. Go to the network interface

Dockermachine | Networking
Virtual machine

Search (Ctrl+/) << Attach network interface Detach network interface

Overview
Activity log
Access control (IAM)
Tags
Diagnose and solve problems

Settings
Networking
Connect
Disks
Size
Security
Advisor recommendations
Extensions
Continuous delivery
Availability + scaling
Configuration

dockermachine867

IP configuration ⓘ
ipconfig1 (Primary)

Network Interface **dockermachine867** [Effective security rules](#) [Topology](#)
Virtual network/subnet: [Dockermachine_group-vnet/default](#) NIC Public IP: [40.122.207.189](#) NIC Private IP: [10.0.2.4](#)
Accelerated networking: **Disabled**

[Inbound port rules](#) [Outbound port rules](#) [Application security groups](#) [Load balancing](#)

Network security group [Dockermachine-nsg](#) (attached to network interface: [dockermachine867](#))
Impacts 0 subnets, 1 network interfaces [Add inbound port rule](#)

Priority	Name	Port	Protocol	Source	Destination
300	SSH	22	TCP	Any	Any
320	HTTP	80	TCP	Any	Any
900	open-port-3389	3389	Any	Any	Any
910	Port_8080	3389	TCP	Any	Any
920	Port_5901	5901	TCP	Any	Any
930	Port_5902	5902	TCP	Any	Any

3. Under Network Interface click on IP Configurations

Home > Virtual machines > Dockermachine | Networking >

dockermachine867
Network interface

Search (Ctrl+/) << → Move Delete Refresh

- Overview
- Activity log
- Access control (IAM)
- Tags
- Settings
 - IP configurations**
 - DNS servers
 - Network security group
 - Properties
 - Locks
 - Export template
- Support + troubleshooting

Resource group (change) : Dockermachine_group
 Location : Central US
 Subscription (change) : Azure for Students
 Subscription ID : 3e2272c5-dbd5-4322-af00-d507c9b0626d

Private IP address : 10.0.2.4
 Public IP address : 40.122.207.189 (Dockermachine-ip)
 Private IP address (IPv6) : -
 Public IP address (IPv6) : -
 Virtual network/subnet : Dockermachine_group-vnet/default
 Network security group : Dockermachine-nsg
 Attached to : Dockermachine

Tags (change) : [Click here to add tags](#)

4. Under IP Configuration select Ipconfig

Home > Virtual machines > Dockermachine | Networking >

dockermachine867 | IP configurations

- Overview
- Activity log
- Access control (IAM)
- Tags
- Settings
 - IP configurations**
 - DNS servers
 - Network security group
 - Properties
 - Locks
 - Export template
- Support + troubleshooting

+ Add Save Discard

IP forwarding settings
 IP forwarding: Disabled Enabled

Virtual network: Dockermachine_group-vnet

IP configurations
 Subnet: default (10.0.2.0/24)

Search IP configurations

Name	IP Version	Type	Private IP address	Public IP address
ipconfig1	IPv4	Primary	10.0.2.4 (Dynamic)	40.122.207.189 (Dockermachine-ip)

5. Click on IP address

Home > Virtual machines > Dockermachine | Networking > dockermachine867 | IP configurations >

ipconfig1
dockermachine867

Save Discard

Public IP address settings

Public IP address

Disassociate Associate

*IP address

Dockermachine-ip (40.122.207.189)

Private IP address settings

Virtual network/subnet

Dockermachine_group-vnet/default

Assignment

Dynamic Static

IP address

10.0.2.4

6. Click on Create new

Choose public IP address

Dynamic public IP addresses that are not in use won't have an IP address assigned to them.

i These are the public IP addresses in the selected subscription and location 'Central US'.

+ Create new

ipconfig1 Dockermachine_group	23.99.192.199 (Static)
----------------------------------	------------------------

Text

7. Under create IP:

- **Name:** New_1
- **SKU:** Select Basic
- **Assignment:** Dynamic
- Click **Ok**

Create public IP address

Name *

SKU ⓘ
 Basic Standard

Assignment
 Dynamic Static

8. Click on **Save**

Home > Virtual machines > Dockermachine | Networking > dockermachine867 | IP configurations >

ipconfig1

dockermachine867

Public IP address settings

Public IP address

*IP address

New_1 (New)

Private IP address settings

Virtual network/subnet

[Dockermachine_group-vnet/default](#)

Assignment

IP address

10.0.2.4

9. Go to the **Overview** page click on **STOP Virtual machine**

Dockermachine Virtual machine

Search (Ctrl+/) <<

Overview

- Activity log
- Access control (IAM)
- Tags
- Diagnose and solve problems

Settings

- Networking
- Connect
- Disks
- Size
- Security
- Advisor recommendations
- Extensions
- Continuous delivery
- Availability + scaling

Resource group (change) [Dockermachine_group](#)

Operating system: Linux (ubuntu 18.04)

Status: Running

Location: Central US

Subscription (change) [Azure for Students](#)

Subscription ID: 3e2272c5-dbd5-4322-af00-d507c9b0626d

Tags (change) [Click here to add tags](#)

Public IP address: **52.165.175.192**

Virtual network/subnet: [Dockermachine_group-vnet/default](#)

DNS name: [Configure](#)

Properties | Monitoring | Capabilities | Recommendations (0) | Tutorials

Virtual machine		Networking	
Computer name	Dockermachine	Public IP address	52.165.175.192
Operating system	Linux (ubuntu 18.04)	Public IP address (IPv6)	-
SKU	18.04-LTS	Private IP address	10.0.2.4
Publisher	Canonical	Private IP address (IPv6)	-

10. Now you can stop the VM without Reserve the IP address.

Stop this virtual machine

 Public IP address '52.165.175.192' will be lost if this VM is stopped

Do you want to reserve the Public IP address?

Do you want to stop 'Dockermachine'?

K21 Academy

10 SUMMARY

In this activity Guide we learned:

- How to create a Virtual Machine on Azure Portal.
- How to Connect to Virtual Machine Using Putty.
- How to Update VM Password.
- How to Open ports on Azure Cloud.
- How To Remove Reserve IP Option

K21 Academy